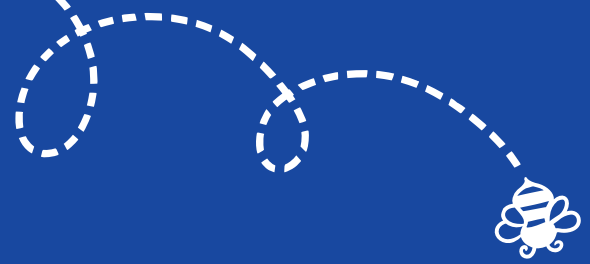


Edmunds Elementary

THE BUZZ



January 17, 2025



A Message from Principal Snellenberger

Hello Edmunds Elementary Families!

I hope that this finds you and yours in good health. There are many different bugs making the rounds in our community. My family has not been immune, but I am hopeful that we are almost through this cycle of illness.

Amazingly, we are at the halfway point for the school year. The second half of the year always seems to fly by. We are looking forward to our upcoming Family Math Night and Fine Arts Night for grades 3-5. Both of these events are wonderful opportunities to gather as a community, play, and see what your children are learning. I hope that you will join us for both of these popular annual events.

Best,

Kolby Snellenberger~ proud principal of EES!



Important Dates

Jan. 20: No School - MLK Jr. Day
Feb. 1: Family Math Night
Feb. 13: Fine Arts Night (grades 3-5)
Feb. 21: Report Cards sent home
Feb. 24 - 28: No School - Winter Break
Mar. 3: No School - Winter Break
Mar. 4: No School - PT Conferences
Mar. 5: Early Release (11:30) - PT Conferences



Announcements

MLK Jr. Day

The school district will be observing Martin Luther King Jr. day on Monday January 20th. Students will return to school on Tuesday January 21st.

Family Math Night

The Edmunds Elementary PTO is sponsoring the 15th Annual Family Math Night in the school gym! Explore the wonders of math with your children and let them show you what they are learning. A variety of activities and math centers will be available for children of all ages, such as legos, card games, chess, games with dice, and many more!

There will be pizza and prizes, too!

Please bring a finger food snack, appetizer, or dessert to share if you are able.

Sign up to [volunteer here](#). We need a lot of volunteers to make Math Night run!

Schedule:

- 5:00 - 5:30 pm Pizza will be served in the cafeteria
- 5:30 - 7:00 pm Math Night activities in the gym

Questions? Please email PTO volunteer, Peggy Price at peggy.a.price@behter.com

Dismissal Expectations - Please help us keep everyone safe!

Dismissal is a very challenging time at EES due to the proximity to Main St., the lack of parking, and the physical design of the space in front of our school building. We need everyone to work together to make our school a safe place for students and families at the end of the day. We had a staff member that was able to come early to block off the horseshoe parking lot prior to dismissal to make the space safer. We are currently unable to staff that position at this time, but the horseshoe drive should only be used by our buses, district vehicles, and folks needing access to handicapped parking.

I know that this is inconvenient, but your cooperation is imperative for keeping all of our students and families safe. Please make sure that you communicate this expectation to anyone who will be picking up your children from school.

Outside Gear Reminder!

We have been able to open our sledding hill during recess several times over the past two weeks. It is so much fun to watch the joy and excitement that sledding brings for our students. For students to be able to safely participate in sledding they must have proper winter gear. When students are not properly dressed for sledding we cannot allow them to participate. Please make sure that your child is bringing the appropriate winter gear to school each day so that they are comfortable when we go outside and they are able to participate in all the fun that is available. Here is what they need to sled: Coat, snow pants, snow boots, and non-cotton gloves.

It is also incredibly helpful if students can put on their snow gear without assistance. If you have young children, work with them at home to practice putting on their gear independently. This will give all students more time to play since adults will not need to spend as much time helping individual students get ready.

Finally I would like to remind everyone that students will be outside in the morning before school and during recess unless the "feels-like" temperature is 0 degrees or colder or if it is raining.

Lost and Found

Our Lost and Found is bursting at the seams. The lost and found can be found inside the main entrance next to the elevators. Please take a moment to check it out if your children are missing any items. Any items that have not been claimed by January 31 will be bagged and donated. We created a slideshow of some of the items in our Lost and Found to help reunite lost items with their owners. You can check out the Lost and Found slideshow by clicking [this link](#).

